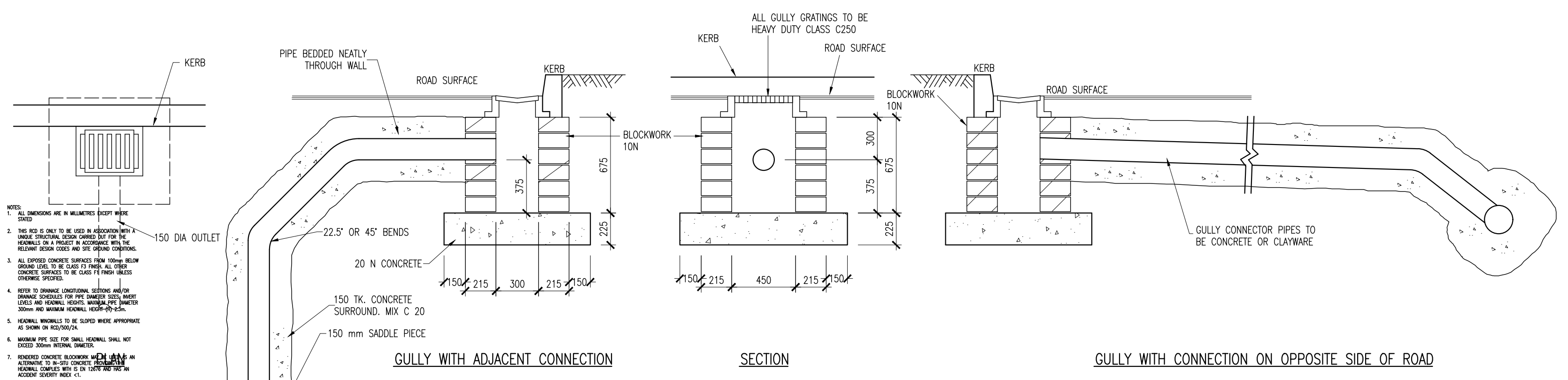


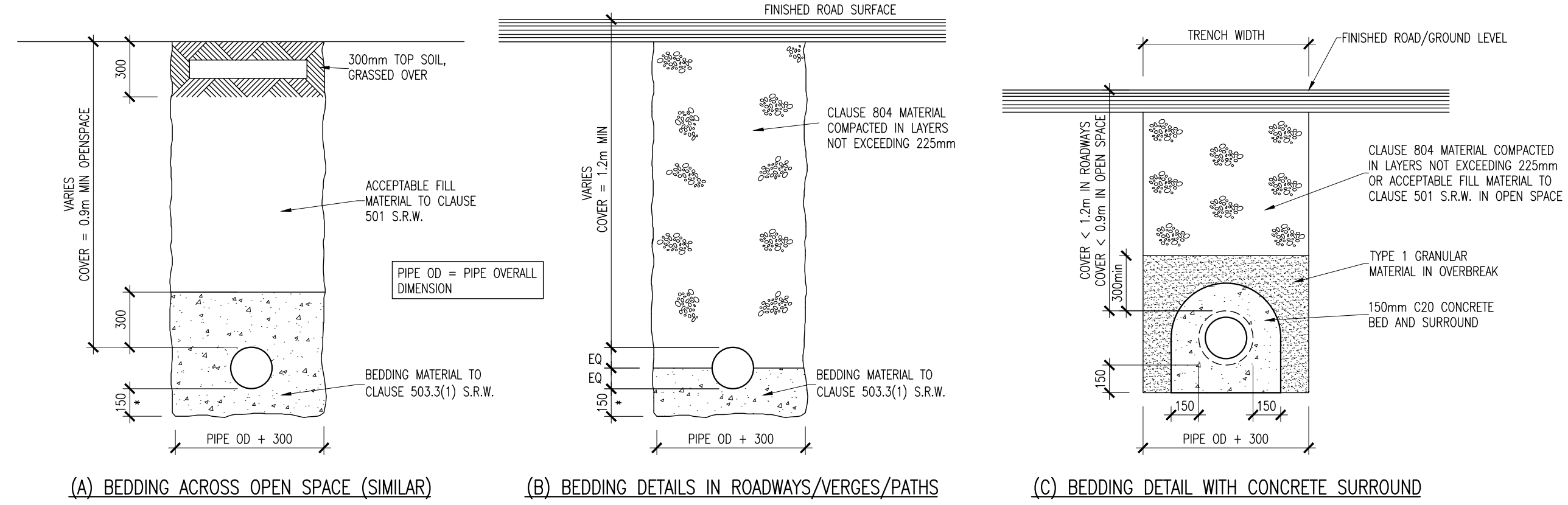
- NOTES:
- WHERE ROCKS OR OTHER HARD TRENCH BOTTOM IS ENCOUNTERED THE FIGURE DENOTED BY * IS TO BE DOUBLED.
 - TYPE 1 GRANULAR MATERIAL : BROKEN STONE OR GRAVEL TO PASS 10mm SIEVE AND BE RETAINED ON 5mm SIEVE.
 - TYPE 2 GRANULAR MATERIAL : BROKEN STONE OR GRAVEL TO PASS 10mm - 25mm SIEVE, ACCORDING TO PIPE SIZE, (SEE TABLE) AND BE RETAINED ON 5mm SIEVE.
 - TYPE 3 SELECTED FILL : UNIFORM READILY COMPACTED MATERIAL FREE FROM TREE ROOTS, VEGETABLE MATTER, BUILDING DEBRIS, AND FROZEN SOIL AND EXCLUDING CLAY LUMPS RETAINED ON A 75mm SIEVE AND STONES RETAINED ON A 37.5mm SIEVE.
 - RIGID PIPES SHALL MEAN CAST OR SPUN IRON, CONCRETE, OR CLAY.
 - FLEXIBLE PIPES SHALL MEAN PIPES OF STEEL, PVC, OTHER PLASTIC OR DUCTILE IRON.
 - ROAD GULLY GRATINGS AND FRAMES SHALL COMPLY WITH THE REQUIREMENTS OF I.S./EN 124: 1994. EACH GULLY AND FRAME SHALL HAVE MARKED CLEARLY THEREON:
 - I.S./EN 124:1994 - CLASS C250 OR CLASS D400 AS APPROPRIATE
 - THE NAME AND/OR IDENTIFICATION MARK OF THE MANUFACTURER AND THE PLACE OF MANUFACTURE.
 - THE YEAR OF MANUFACTURE.
 - MARK OF THE CERTIFICATION BODY
- ROAD GULLY PITS TO BE IN-SITU CONCRETE OR BLOCKWORK AS SPECIFIED

TYPE 2 GRANULAR MATERIAL :

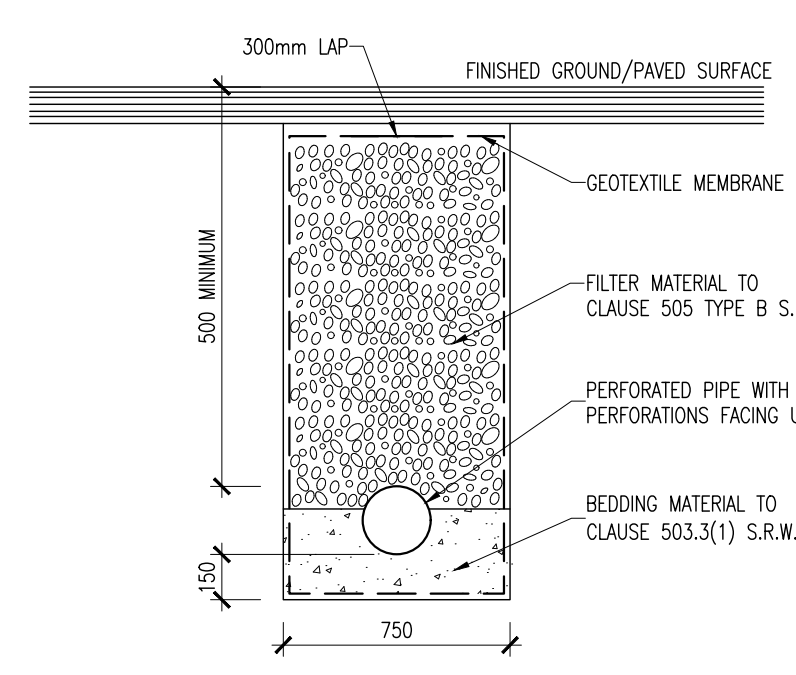
PIPE SIZE	100% PASSING
UP TO 225mm	10mm SIEVE
225 TO 450mm	20mm SIEVE
ABOVE 450mm	25mm SIEVE



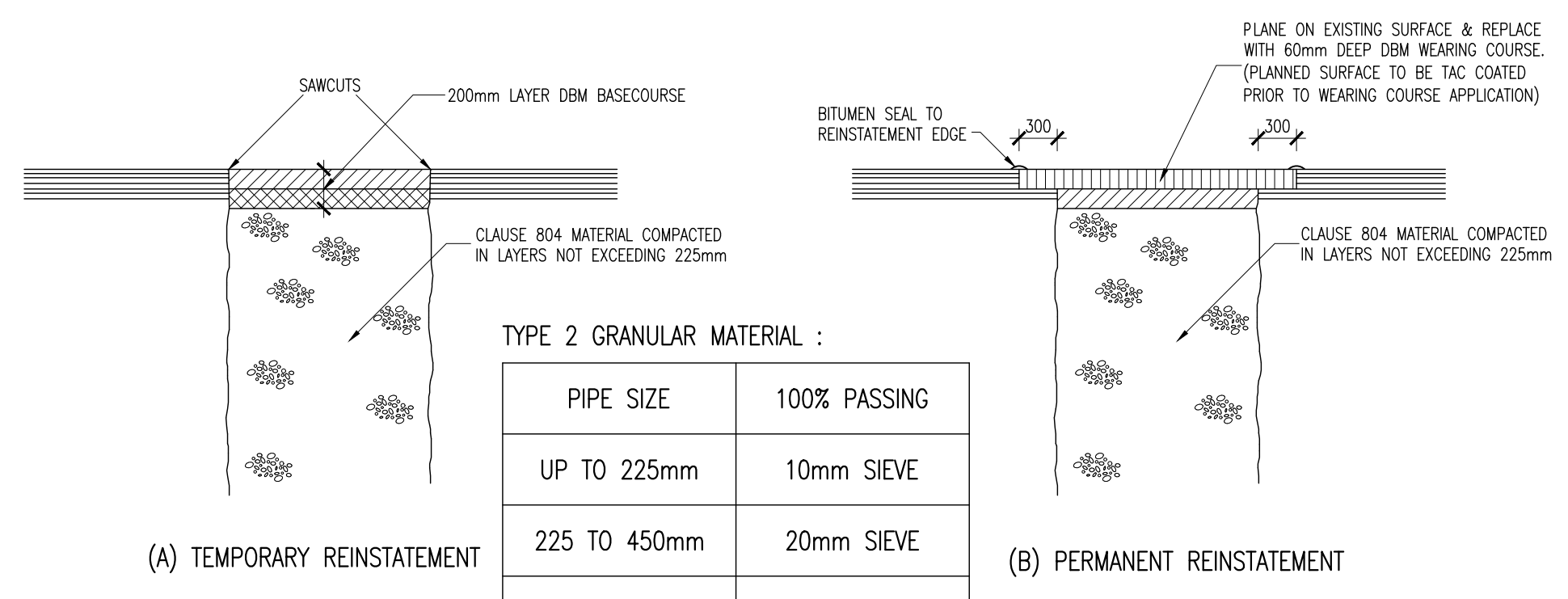
ROAD GULLY DETAILS
SCALE 1:25



TYPICAL BEDDING DETAILS
SCALE 1:25



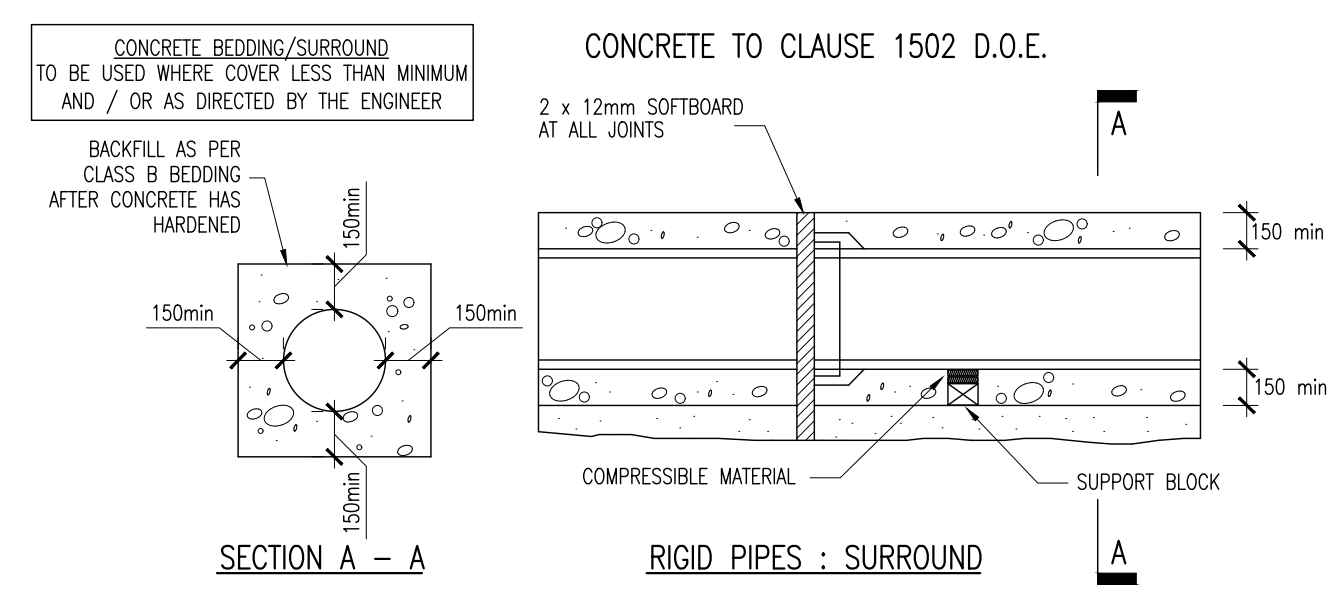
TYPICAL FILTER DRAIN
SCALE 1:25



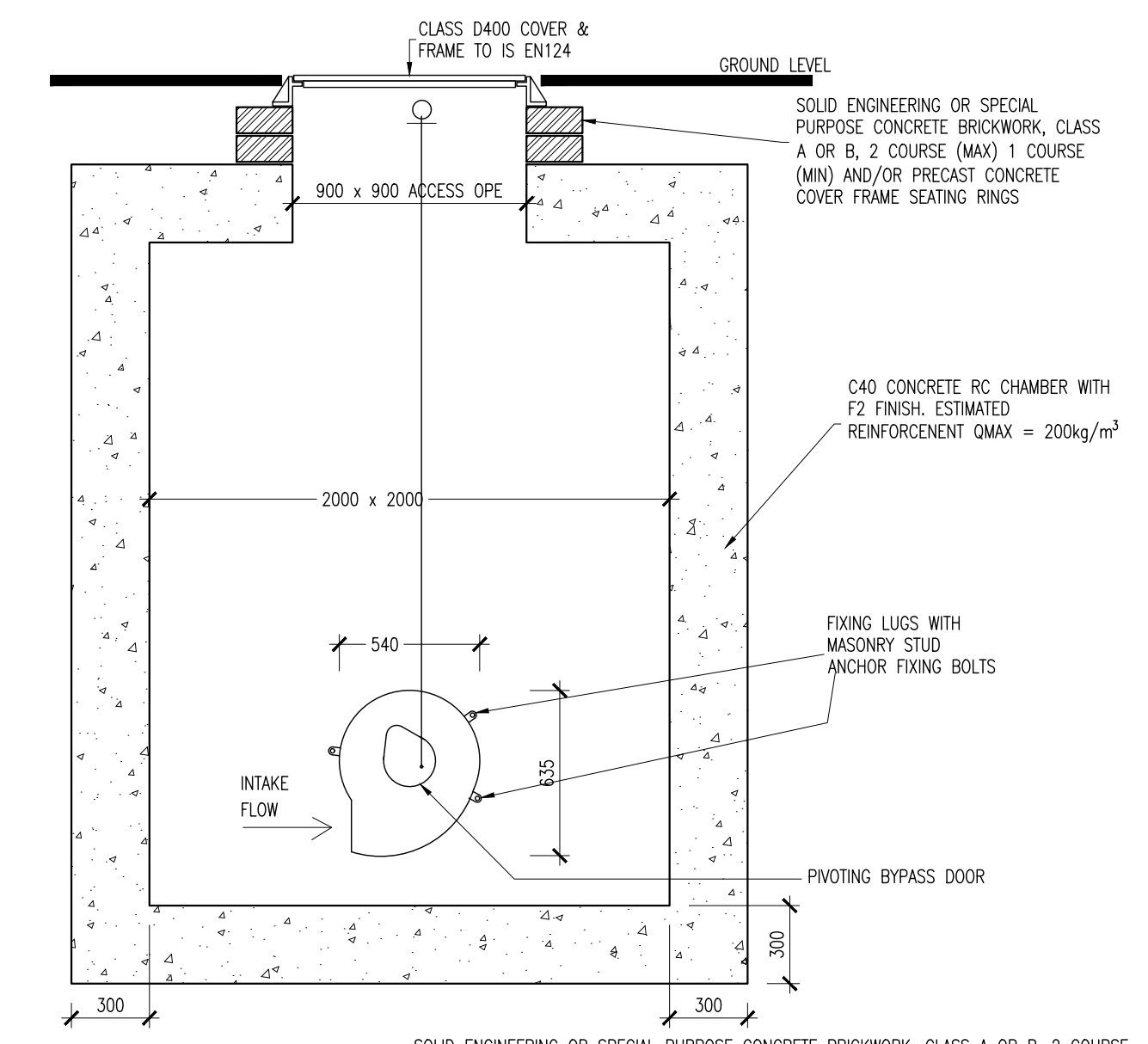
TYPE 2 GRANULAR MATERIAL :

PIPE SIZE	100% PASSING
UP TO 225mm	10mm SIEVE
225 TO 450mm	20mm SIEVE
ABOVE 450mm	25mm SIEVE

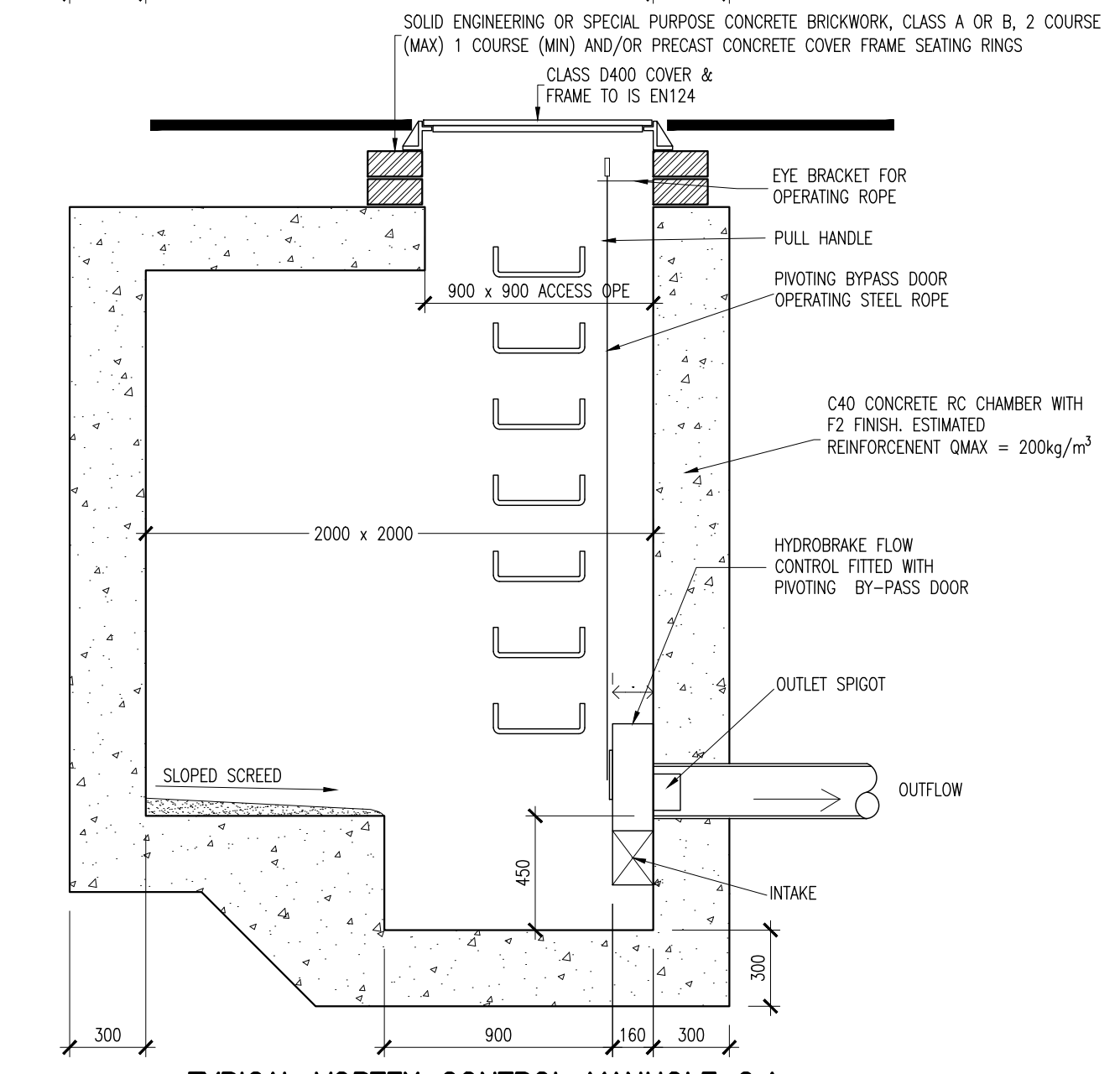
TRENCH REINSTATEMENT DETAILS
SCALE 1:25



CONCRETE BEDDING SURROUND DETAILS
SCALE 1:25



TYPICAL VORTEX CONTROL MANHOLE G.A.
SCALE 1:25



C	31-07-20	STAGE 3 NEW APPLICATION	DJG	DMW
B	10-03-20	STAGE 2 NEW APPLICATION	DJG	AGS
A	09-10-19	PLANNING SHD STAGE 3	DJG	DCC
REV.	DATE	DESCRIPTION	BY	CHKD.

PLANNING SHD STAGE 3

DESIGNED	DMW	PREPARED	DJG
DATE	DEC 2018	CHECKED	DJR

DBFL Consulting Engineers email: info@dbfl.ie www.dbfl.ie

DBFL office Ormond House, Upper Ormond Quay, Dublin 7, Ireland. PHONE +353 1 400 4000 FAX +353 1 400 4050

Waterford office Unit 2, The Chandlery, 1-2 O'Connell Street, Waterford, Ireland. PHONE +353 51 309 5500 FAX +353 51 844 913

PROJECT
STRATEGIC HOUSING DEVELOPMENT AT COLPE WEST, DROGHEDA, CO. MEATH

DRG. TITLE
DRAINAGE DETAILS SHEET 2

CLIENT
SHANNON HOMES DROGHEDA LTD.

SCALE	AS SHOWN @A1	FILE REF.	170092-3062
DRG. NO.	170092-3062		C